

# enummi® Restoring Eye Cream

The beauty of science

- Combats dark circles around the eyes
- Helps reduce the appearance of puffiness, fine lines, and wrinkles
- Restores vital nutrients to the eye area with amino acids

## What is enummi Restoring Eye Cream?

The skin around the eyes is very delicate and thin and is often one of the first places that shows signs of aging. enummi® Restoring Eye Cream reduces the appearance of dark circles, puffiness, fine lines, and wrinkles, while protecting the delicate under-eye area for a brighter eye and smooth appearance.

## Key Features

- Provides antioxidant protection against the elements
- Provides superior moisturizing and skin softening benefits with emollients and deep moisturizing ingredients
- Contains Transfer Factor E-XF™

## Did You Know?

That not getting enough sleep can contribute to dark circles and puffiness. Make sure to get a full eight hours of sleep and avoid drinking too many fluids right before you go to bed. Try putting your eye cream in the refrigerator overnight and applying it in the morning to help reduce puffiness.

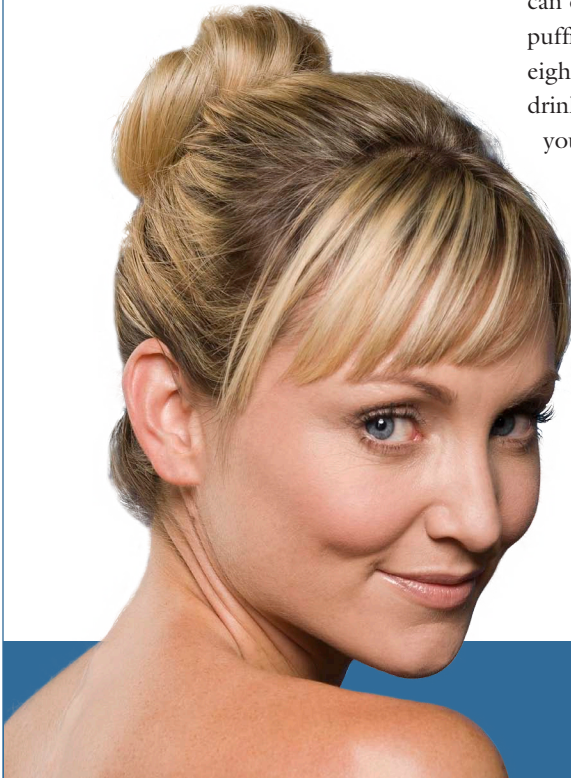


## Recommended Use:

Apply enummi Restoring Eye Cream to your ring finger and gently pat into the delicate skin around the eye area. Be careful not to get it directly in the eyes. Apply morning and evening for best results.

## Ordering Information

Item # 25035 - .5 oz / 15 ml tube  
Item # 25036 - 12 for the price of 11  
Item # 25062 - enummi® Skin Care System



**4Life**  
TOGETHER, BUILDING PEOPLE™

# enummi® Restoring Eye Cream

The beauty of science

## Key Ingredients

- A natural emollient derived from olives, **squalane** is a natural component found in the skin with antioxidant and immune-stimulating properties. As a natural moisturizing factor (NMF), it helps keep the skin moist by attracting and retaining water.
- **Acetyl hexapeptide-3** is an advanced hexapeptide that works to improve the appearance of wrinkles, especially in the eye area.
- **Phospholipids** are essential fatty acids that help maintain healthy cell barrier function. As natural moisturizing factors (NMF), they keep the skin moist by attracting and retaining water.
- **Chrysin** conditions the skin and works to reduce dark circles and puffiness in the eye area.
- **Amino Acid Blend** is a potent blend of antioxidants and amino acids that are found naturally in the body. This blend helps to promote healthy collagen production, energize cells, and retain moisture, preventing transepidermal water loss (TEWL). The ingredients in the blend act as natural moisturizing factors (NMF) to help keep the skin moist by attracting and retaining water.
- **Sandalwood, amur corktree bark, and barley extracts** help skin retain moisture levels, prevent transepidermal water loss (TEWL), and increase skin suppleness.
- Known for its excellent polyphenol content and antioxidant properties, **Camellia sinensis (white tea) extract** helps reduce the effects of oxidative damage and environmental stresses on the skin.

INGREDIENTS: Water, Squalane, Acetyl Hexapeptide-3, Glyceryl Stearate, PEG-100 Stearate, Butylene Glycol, Cetearyl Methicone, Dimethicone, Linoleic Acid, Glycine Soja Sterols, Phospholipids, Cetearyl Alcohol, C12-15 Alkyl Benzoate, Tribehenin, Ceramide 2, PEG-10 Rapeseed Sterol, Palmitoyl Oligopeptide, Cyclopentasiloxane, Cyclohexasiloxane, Ethylhexyl Palmitate, Silica Dimethyl Silylate, Caprylyl Glycol, Phenoxyethanol, Hexylene Glycol, Sodium Hyaluronate, Glycerin, Steareth-20, N-Hydroxysuccinimide, Chrysin, Palmitoyl Tetrapeptide-7, Transfer Factor E-XF™, Ascorbyl Palmitate (Vitamin C), Retinyl Palmitate (Vitamin A), Tocopheryl Acetate (Vitamin E), Disodium EDTA, Sodium PCA, Betaine, Sorbitol, Glycine, Alanine, Proline, Serine, Threonine, Arginine, Lysine, Glutamic Acid, Xanthan Gum, Hydrogenated Lecithin, Ammonium Acryloyldimethyltaurate/VP Copolymer, Behenyl Alcohol, *Santalum album* (Sandalwood) extract, *Phellodendron amurense* (Corktree) Bark extract, *Hordeum distichon* (Barley) extract, Tetrahexyldecyl Ascorbate, Bisabolol, Sodium Hydroxide, *Gossypium herbaceum*, Mica, Titanium Dioxide, Sorbic Acid, *Camellia sinensis* (White Tea) Leaf extract, and Fragrance.

**4Life**

TOGETHER, BUILDING PEOPLE™